

# Model P-5050 Thermoelectric Generators



Gentherm Global Power Technologies' \* (GPT) Model P-5050 Thermoelectric Generator contains no moving parts. It is a reliable, low maintenance source of DC electrical power for any application where regular utilities are unavailable or unreliable.

## Power Specifications

Power Rating at 20°C  
50 Watts at 6.7 Volts  
50 Watts at 14 Volts  
50 Watts at 27 Volts

## Electrical

Adjustment:	6.7V	4 - 7.5 Volts
	12 V	12 -18 Volts
	24 V	24 - 30 Volts

Output: Terminal block which accepts up to 8 AWG wire. Opening for 3/4" conduit in the base of the cabinet.

## Fuel

Natural Gas:	4.8 m <sup>3</sup> /day (168 ft <sup>3</sup> /day) of 1000 BTU/ft <sup>3</sup> (37.7 MJ/m <sup>3</sup> ) gas max 115 mg/m <sup>3</sup> (~170 ppm) H <sub>2</sub> S max 120 mg/m <sup>3</sup> H <sub>2</sub> O max 1% free O <sub>2</sub>
Propane:	7.2 l/day (1.9 US gal/day)
Max. Supply Pressure:	344 kPa (50 psi)
Min. Supply Pressure:	130 kPa (15 psi)
Fuel Connection:	1/4" MNPT

## Environmental

Ambient Operation Temperature: Max. 55°C (130°F) Min. -40°C (-40°F).  
Operating Conditions: Unsheltered operation, shaded at > 45°C.  
Please contact GPT for operating conditions below -40°C or above +55°C.

## Materials of Construction

Cabinet:	304 SS
Cooling Type:	Natural Convection
Fuel System:	Brass, Aluminum & SS

Certified To CSA Std T.I.L. R-10

### Standard Features

- Automatic Spark Ignition (SI)
- Automatic Fuel Shut-off (SO)
- Fuel Filter
- Low Voltage Alarm Contacts (VSR)
- Reverse Current Protection
- API 12N Flame Arrestor (Natural Gas Only)

### Optional Features

- Remote Start
- Corrosive Environmental Fuel System
- Cathodic Protection Interface
- Pole Mount or Bench Stand

**Note:** Specifications shown are for standard configurations. Gentherm Global Power Technologies' \* (GPT) Integrated Systems Engineering Department is available to design custom voltages, fuel supply systems, and non-standard operating temperatures.

\* Formerly Global Thermoelectric



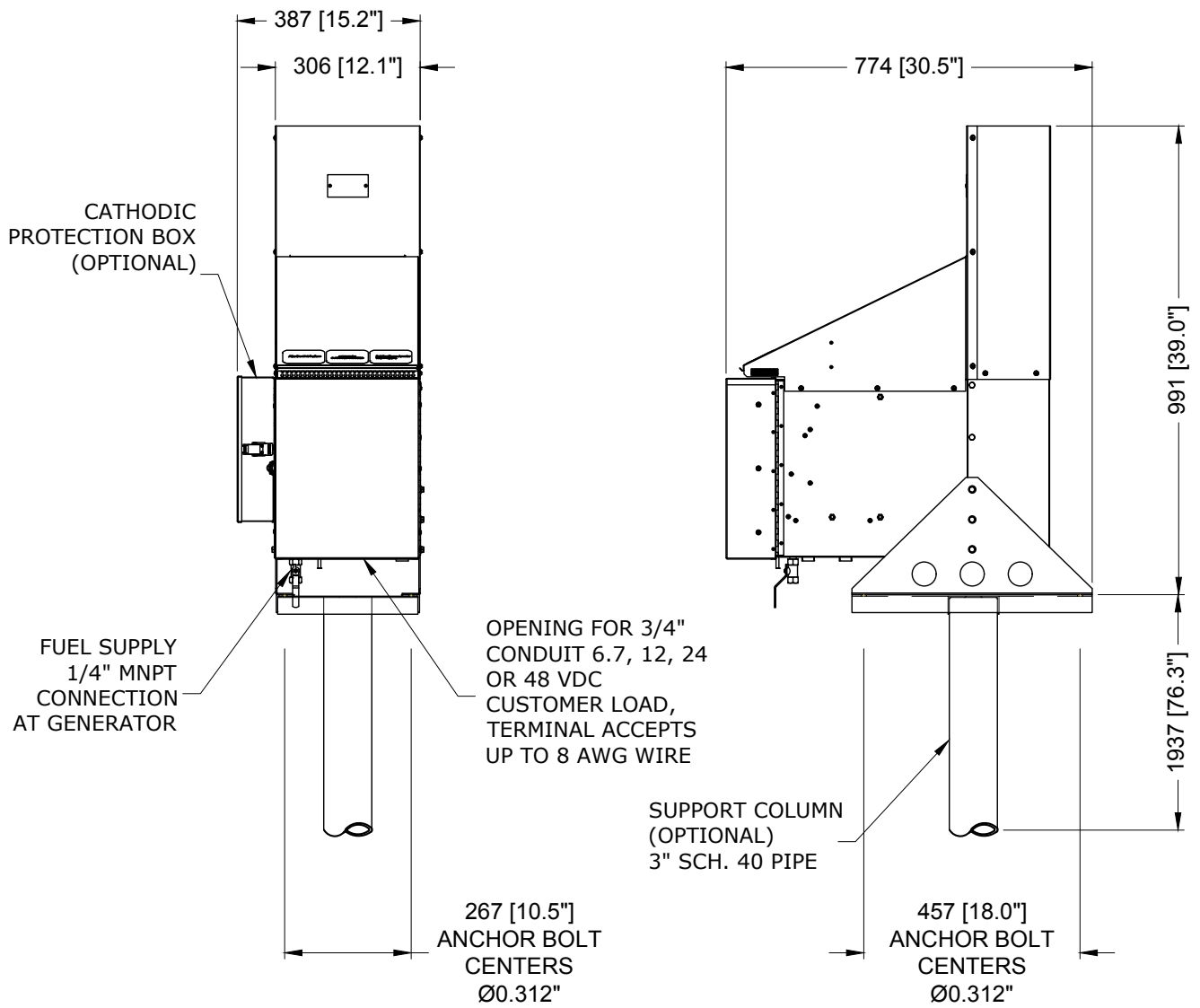
**Intertek**

ISO 9001 Registered

Power where you need it.®

**GENTHERM**   
GLOBAL POWER TECHNOLOGIES

# Typical Installation



**NOTES:**

1. GENERATOR WEIGHT: 41 kg [90 lb]
2. DIMENSIONS IN mm [INCHES].

MODEL: P-5050  
 DRW: 68320rev1