

Model 1120 Thermoelectric Generators



Hazardous Area Generator

Gentherm Global Power Technologies' * (GPT) Model 1120 Thermoelectric Generator is Class 1, Div. 2 or Class 1, Div. 1 Hazardous area rated. With no moving parts it is a reliable, low maintenance source of DC electrical power for any application where regular utilities are unavailable or unreliable.

Power Specifications

Power Rating at 20°C
110 Watts at 6.7 Volts
100 Watts at 12 Volts
100 Watts at 24 Volts
100 Watts at 48 Volts

Standard Features

- Automatic Spark Ignition (SI)
- Automatic Fuel Shut-off (SO)
- Fuel Filter
- Low Voltage Alarm Contacts (VSR)
- Volt & Amp Meters
- Flame Arrestor
- CSA Certification
(Class 1, Div. 2 Group D, Temp T3)

Optional Features

- FM certification (Class 1, Div. 1, Temp T3)
- 316 SS regulator & fuel valve
- Cathodic Protection Interface Panel
- Pole Mount or Bench Stand
- Intake Air Filter

Note: Specifications shown are for standard configurations. Gentherm Global Power Technologies' * (GPT) Integrated Systems Engineering Department is available to design custom voltages, fuel supply systems and non-standard operating temperatures.

Specification data stated in this document is subject to change without notice. To verify these specifications are current, contact your Gentherm Global Power Technologies (GPT) sales representative.

* Formerly Global Thermoelectric

Electrical

Adjustment:	6.7 V	up to 11 Volts
	12 V	12 -18 Volts
	24 V	24 - 30 Volts
	48 V	48 - 60 Volts

Reverse current protection included.

Output: Terminal block which accepts up to 00 AWG wire. Opening for two 3/4" NPT ports in the base of the electronics enclosure.

Fuel

Natural Gas:	8.8 m ³ /day (311 Sft ³ /day) 1000 BTU/Sft ³ (37.7 MJ/SM ³) gas max 115 mg/Sm ³ (~170 ppm) H ₂ S max 120 mg/Sm ³ H ₂ O max 1% free O ₂
Propane:	11.4 l/day (3.0 US gal/day)
Max. Supply Pressure:	172 kPa (25 psi)
Min. Supply Pressure:	69 kPa (10 psi)
Fuel Connection:	1/4" MNPT

Environmental

Ambient Operation Temperature: Max. +45°C (115°F) Min. -20°C (-4°F).
Operating Conditions: Unsheltered operation certified for use in hazardous areas.
Please contact GPT for operating conditions below -20°C or above +45°C.

Materials of Construction

Cabinet:	316 SS
Cooling Type:	Natural Convection
Fuel System:	Aluminum & Stainless Steel

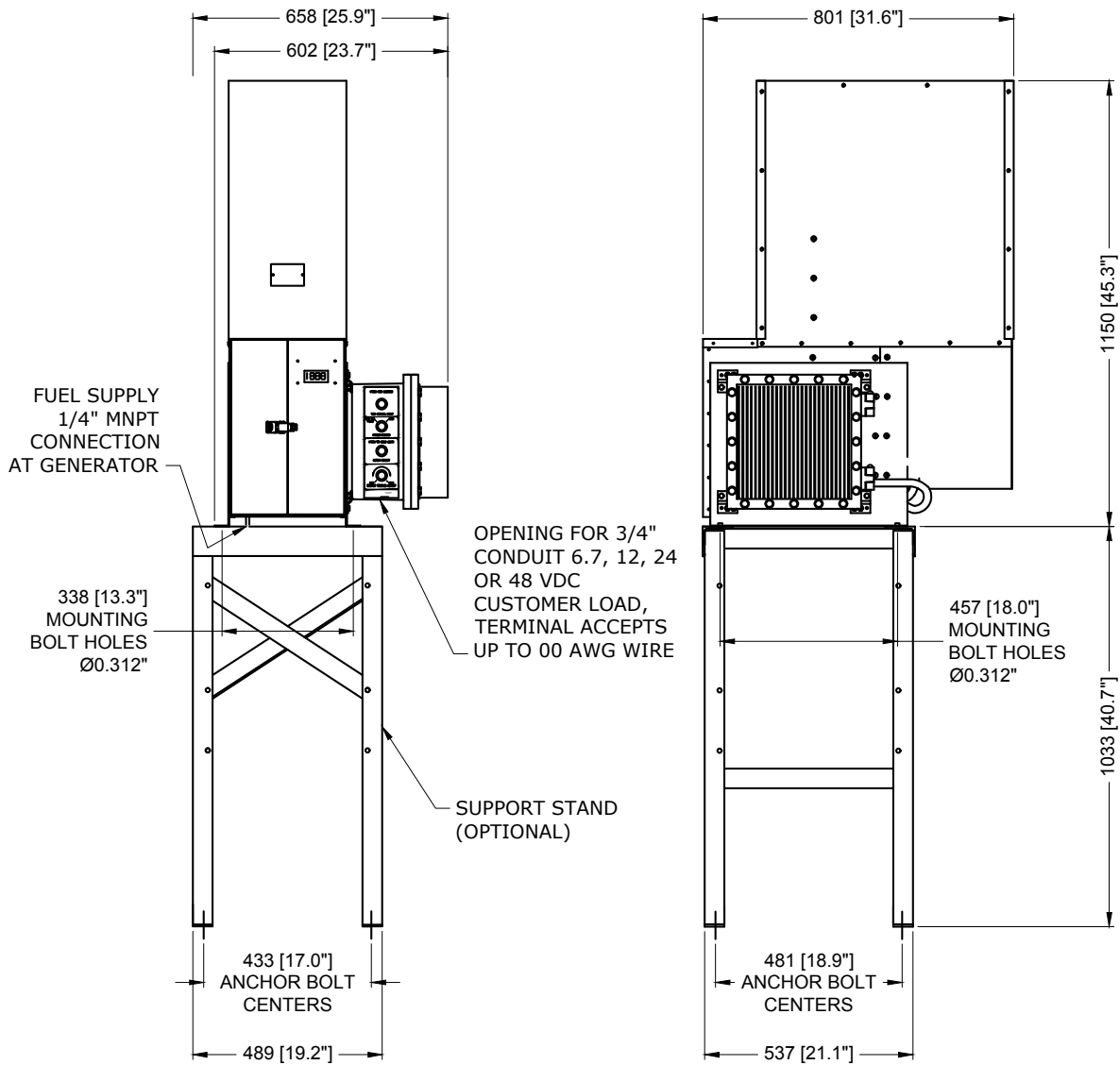


ISO 9001 Registered

Power where you need it.®

GENTHERM 
GLOBAL POWER TECHNOLOGIES

Typical Installation



- NOTES:
 1. GENERATOR WEIGHT: 130 Kg [286 lb]
 2. DIMENSIONS IN mm [INCHES].

MODEL: 1120
 DRW: 42359 rev2